

NOTICE Renewal of Navigation-restricted Period in Osaka Area of Hanshin Port

Contact points: Osaka Ports and Harbors Bureau 06-6571-1966
 Osaka harbor Information Center for Security of Ship Navigation 06-6612-4363
 Website: <http://osakaharbor-info.com/>

As shown below, the Captain of Hanshin Port announced a renewal of the navigation-restricted period along with a partial change in the administrative guidelines within southwest area of Osaka Passage in Section 6 Hanshin Port's Osaka Area.

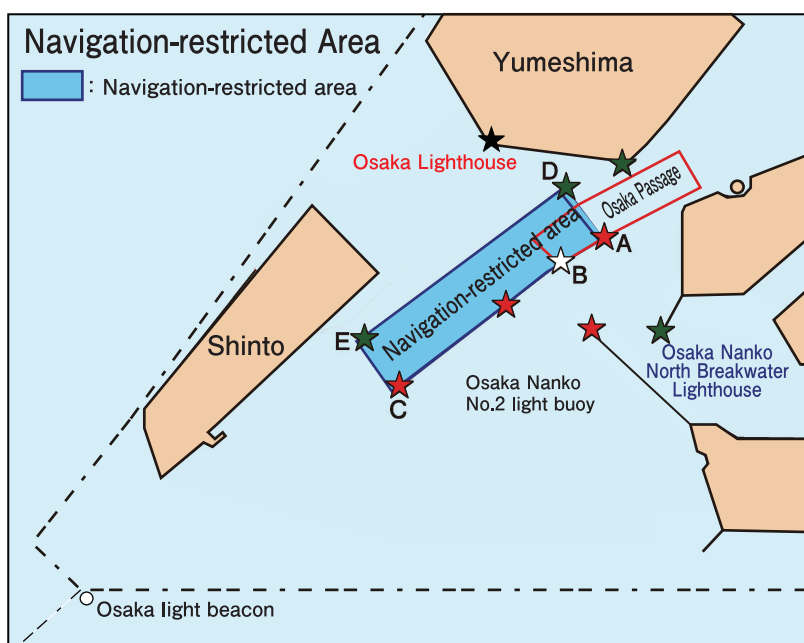
All vessels passing nearby are requested to navigate with the utmost attention paid and cooperate for ensuring safety at sea.

Restriction on the traffic vessels

[Renewal of period]

1. Area

The sea area between the line connecting points A through C and the line connecting points D and E as described below (See the map on the left-hand side).



Point	Start point	Direction	Distance	Marker name
★ Base point	Osaka Nanko North Breakwater Lighthouse	34-37-43.2N 135-23-47.6E		
★ Point (A)	From base point	324° 20' 7"	964m	Red light buoy
☆ Point (B)	From base point	300° 57' 36"	1,095m	Osaka No. 2 light buoy
★ Point (C)	From base point	254° 34' 32"	2,836m	No. 4 light buoy south of Osaka Shinto reclaimed land area
★ Point (D)	From base point	322° 29' 28"	1,581m	Green light buoy
★ Point (E)	From base point	264° 15' 11"	3,114m	Green light buoy

2. Duration April 1, 2024 to March 31, 2025 inclusive

3. Lateral marks

The following marks is placed to indicate the navigation-restricted area.

Starboard hand marks			
	★ Point A	☆ Point B	★ Point C
Light	Fl R 3s	Q(9) W 15s	Fl R 3s
Range	2 (M)	5 (M)	6.5 (M)
Color	Red	West cardinal mark	Red

Port hand marks			
	★ Point D	★ Point E	
Light	Fl G 3s	Fl G 3s	
Range	2 (M)	2 (M)	
Color	Green	Green	

4. Restriction [Unchanged]

Administrative Guidance for Navigational Restrictions

- (1) Any vessel intending to enter the restricted area from outside of the restricted area, or go outside from the restricted area, shall keep out of the way of the other vessel which is navigating the restricted area along the course of the area.
- (2) A vessel shall not, except in any of the following cases, cast anchor or release a vessel towed within the restricted area.
 - I. In a case where a vessel intends to avert an accident.
 - II. In a case where a vessel is engaged in rescue of human life or a vessel in imminent danger.
 - III. In a case where a vessel is under the permission of the Captain of the Port.
- (3) When two vessels are meeting on reciprocal courses within the restricted area, each shall pass on the starboard side of the area.

* A person who commits the violation of the Captain of the Port's orders shall be punished by Port Regulations Law in Japan.

5. Administrative Guidelines

[Unchanged]

Guidance concerned with Restriction

- (1) When a vessel of over 500 gross tons intends to navigate Osaka Passage, the vessel shall navigate the restricted area along the course of the area.
- (2) A vessel of over 500 gross tons which intends to depart from Osaka Nanko, shall navigate sighting Osaka Nanko No. 2 buoy on her port side.
- (3) In order to secure the navigational traffic safety of vessels in southwest area of Osaka Passage, no vessel of over 500 gross tons can proceed in parallel with or overtake any other vessel in the navigation-restricted area.

* The Captain of Hanshin Port's announcements are carried on the website of the Osaka Coast Guard Office (<https://www.kaiho.mlit.go.jp/05kanku/osaka/>)