

NOTICE ON WORK FIN NAVIGATION AND ANCHORING PROHIBITED AREA INVOLVED BY SHINTO CONSTRUCTION WORK IN OSAKA AREA SECTION 6 OF HANSHIN PORT

Inquiry : Osaka Harbor Information Center for Security of Ship Navigation [Website: <http://www.osakaharbor-info.com/>] TEL: 06-6612-4363
 Ordering party : Osaka Port & Airport Construction Office, Kinki Regional Development Bureau TEL: 06-6574-8562
 Constructor : Wakachiku and Kabuki Specified Construction Joint Venture TEL: 06-4703-5266

The following work will be carried out in the navigation and anchoring prohibited area in Osaka Area Section 6 of Hanshin Port:
 1) Deposition of riprap and gravel, 2) Laying of sand prevention sheets, 3) Cutting steel pipe sheet piles, 4) Receiving girder and parent pile installation work, 5) Drainage pipe laying, 6) Placing steel pipe sheet piles, 7) Maintenance management of pollution prevention film, and 8) Allocation of watch boats. All vessels passing nearby are requested to give a wide berth and navigate with caution.

1. Work Period and Time

- From March 21, 2021 through January 31, 2022
- Daytime work: Sunrise to sunset

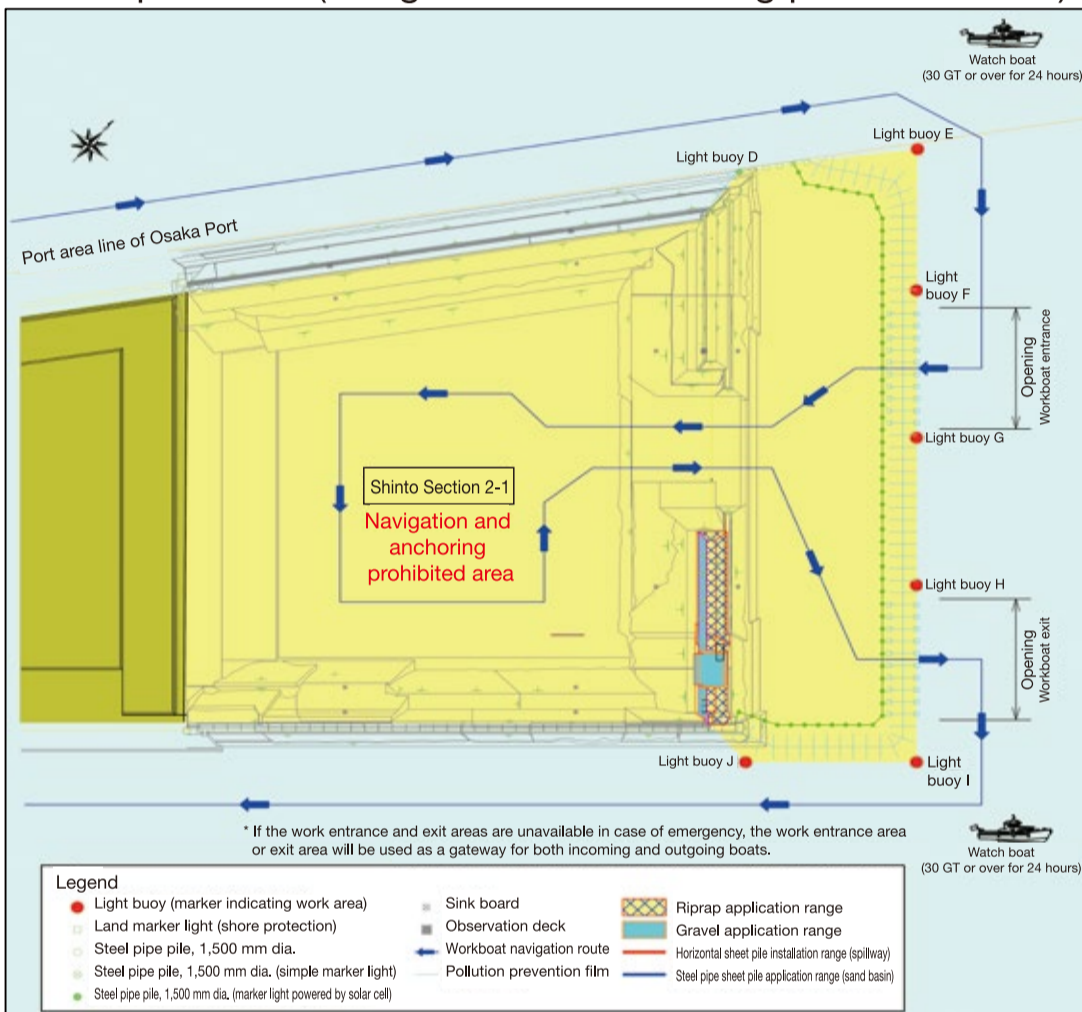
2. Contents of Work

The following work will be conducted in the navigation and anchoring prohibited area as shown below.

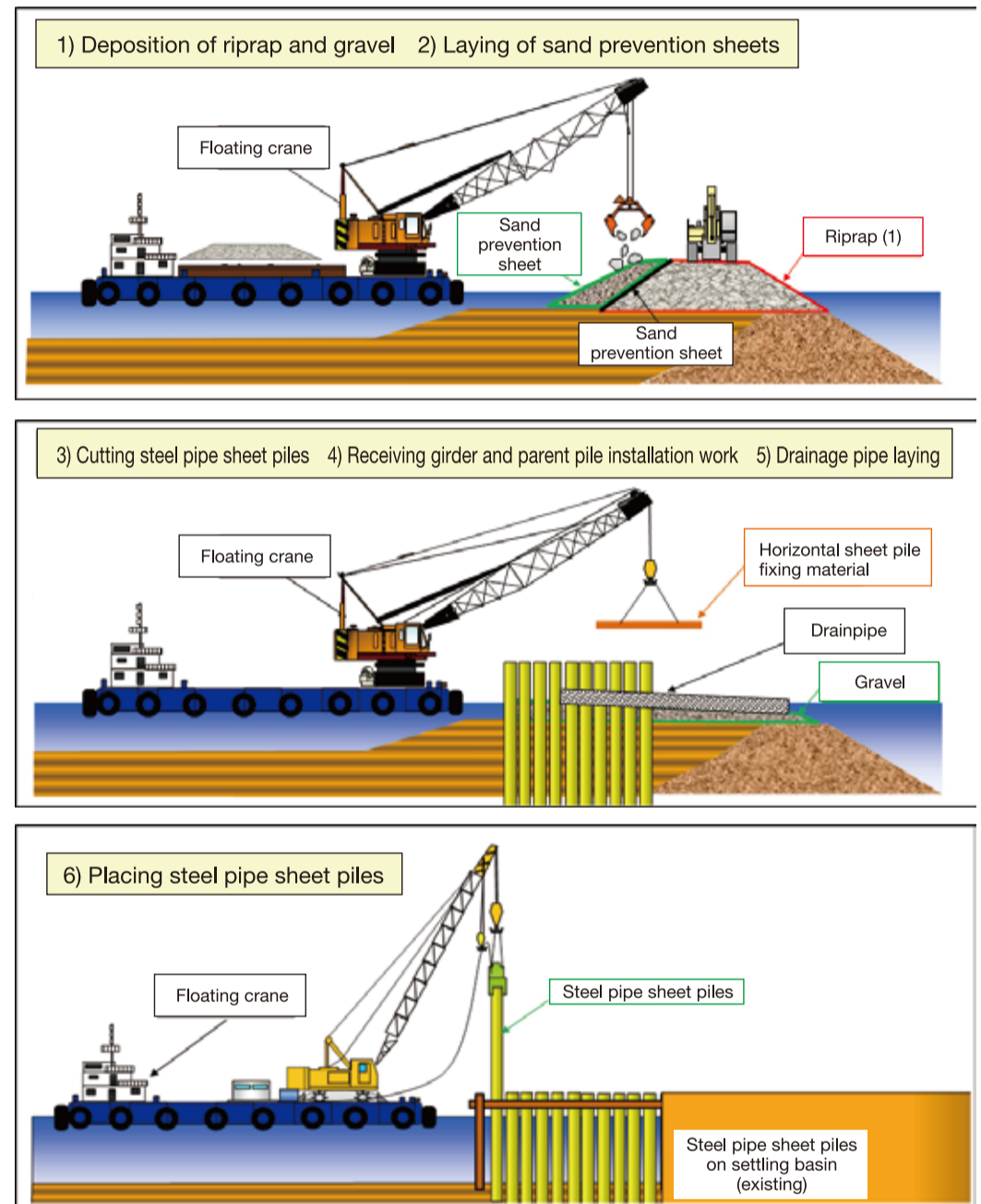
- 1) Deposition of riprap and gravel, 2) Laying of sand prevention sheets, 3) Cutting steel pipe sheet piles, 4) Receiving girder and parent pile installation work, 5) Drainage pipe laying, 6) Placing steel pipe sheet piles, 7) Maintenance management of pollution prevention film, and 8) Allocation of watch boats.

Type of work	2021										2022	
	Mar. 21	Apr.	May	June	July	Aug. 31	Sept.	Oct.	Nov.	Dec.	Jan. 31	
1) Deposition of riprap and gravel	Sounding and measuring instrument installation											
2) Laying of sand prevention sheets												
3) Cutting steel pipe sheet piles												
4) Receiving girder and parent pile installation work												
5) Drainage pipe laying												
6) Placing steel pipe sheet piles												
7) Maintenance management of pollution prevention film	Other construction work											
8) Allocation of watch boats	Other construction work											
9) Sweeping												

Work plan view (navigation and anchoring prohibited area)

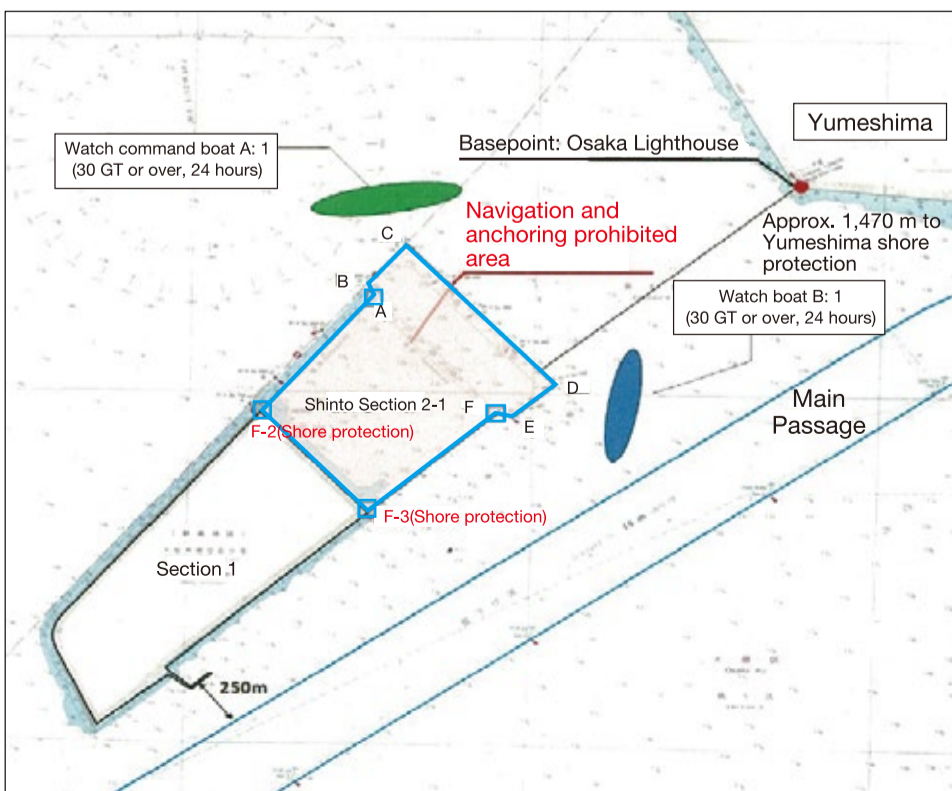


3. Work Overview



4. Safety Measures

- (1) Each workboat will display a light and object specified by the Act for Preventing Collisions at Sea along with a flag 1) indicating the destination of the boat.
- (2) A watch boat (4.9-gross-ton class) will be allocated during underwater work.
- (3) An international signal flag 2) (Flag A) will be hoisted during underwater work.
- (4) During the work period from March 21 through August 31, 2021, the watch boats, as described in the following table, will be allocated around the work area. Each watch boat will hoist a warning flag 3) to draw the attention of vessels passing nearby.



Base point	Osaka lighthouse	World Geodetic System	34-38-36.6N	135-22-44.7E
Point A	From base point	251° 32' 29"	1,979 m away	
Point B	From point A	350° 26' 04"	76 m away	
Point C	From point B	38° 28' 04"	263 m away	
Point D	From point C	137° 29' 25"	995 m away	
Point E	From point D	227° 29' 39"	250 m away	
Point F	From point E	275° 28' 35"	75 m away	

Type of watch boat	Performance/Equipment	Number of boats	Watching hour
Watch command boat A	30 GT or over (International VHF transceiver equipped)	1	24 hours
Watch boat B	30 GT or over	1	24 hours

1) Destination indication flag



2) International signal flag (Flag A)



3) Watch boat flag

