

# NOTICE ON DREDGING IN PASSAGE AND ANCHORAGE IN OSAKA AREA SECTION 1 OF HANSHIN PORT

Contractor: Toyo and Mirai Specified Construction Joint Venture [Night contact: Yamamoto] Tel.: 06-4703-3504  
 Ordering party: Osaka Port & Airport Construction Office, Kinki Regional Development Bureau, Ministry of Land, Infrastructure, Transport and Tourism Tel.: 080-6830-2311  
 Tel.: 06-6574-8562

Inquiry: Osaka Harbor Information Center for Security of Ship Navigation Tel.: 06-6612-4363  
 [Website: <http://www.osakaharbor-info.com/>]

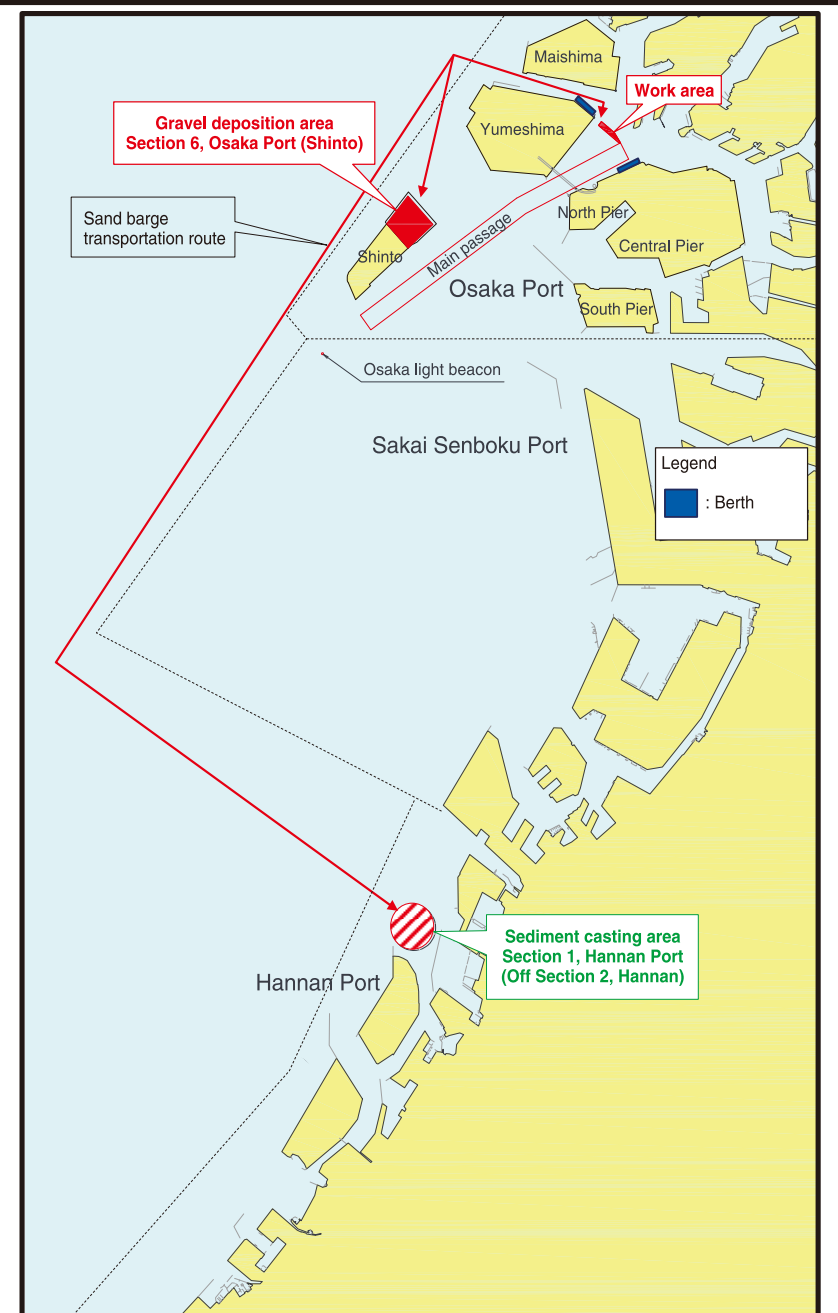
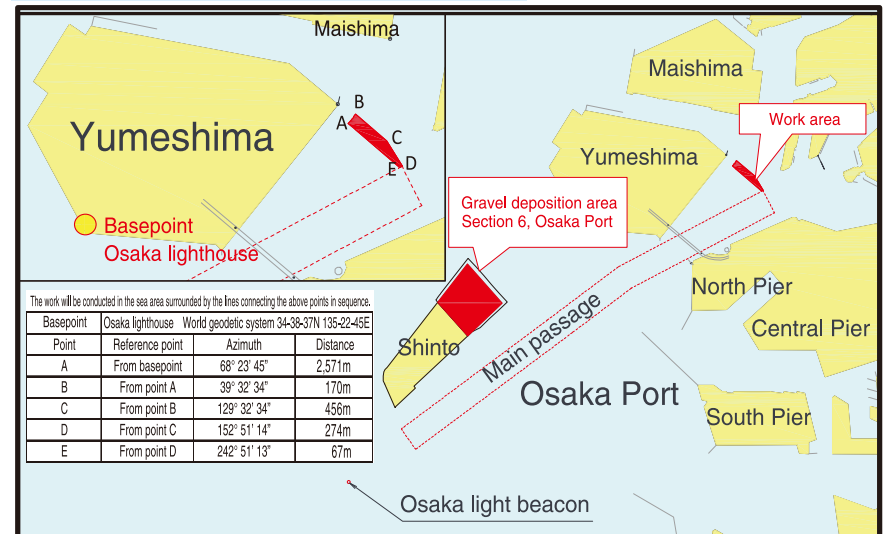
Passage and anchorage dredging will be conducted in Section 1 of the Osaka area of Hanshin Port. The dredged sediment will be transported by sea to Section 1 of Hannan Port (off Section 2 of Hannan), where the sediment will be cast. All vessels passing nearby are requested to give a wide berth and navigate with caution.

## 1. Work Period and Time

From July 12, 2021 through January 31, 2022  
 Work time: 20:00 - 6:00 the next morning (dredging),  
 sunrise to sunset (sediment transportation and casting)

Type of work	2021												2022						
	May		June		July		Aug.		Sept.		Oct.		Nov.		Dec.		Jan.	Feb.	Mar.
Preparatory work																			
[Osaka Port]																			
Grab dredging																			
Hard soil dredging																			
Sand barge transportation																			
Sediment casting																			
Gravel deposition																			
Pollution prevention film (frame)																			
Deployment of safety patrol vessels																			
[Muko River]																			
Backhoe dredging																			
Sand barge transportation																			
Sediment casting																			
Miscellaneous work (impurity removal)																			
Pollution prevention film (frame)																			
Deployment of safety patrol vessels																			
Sweeping																			

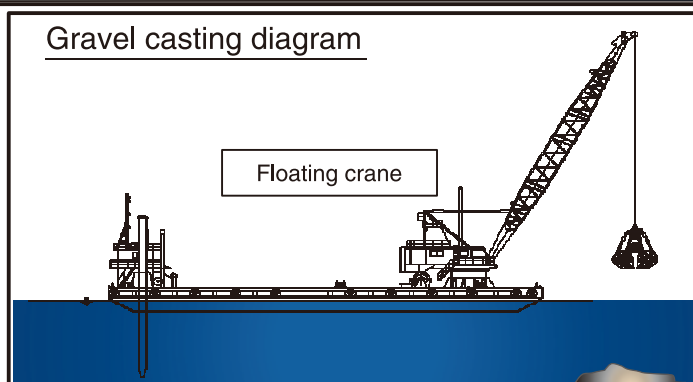
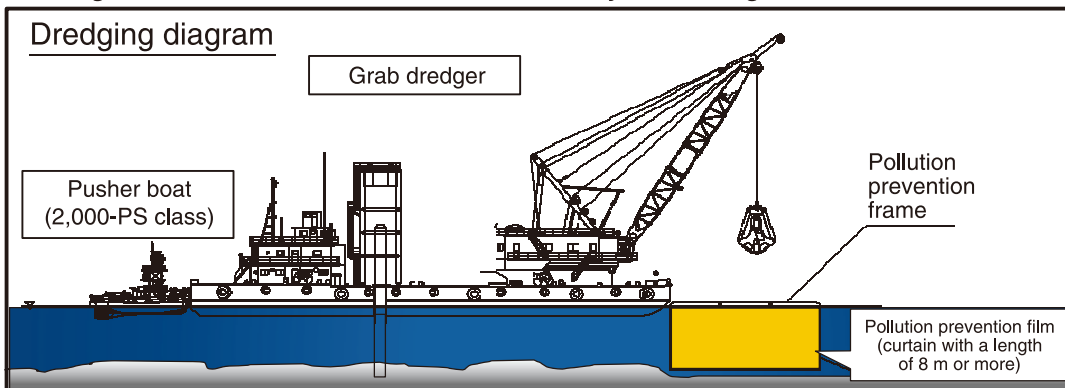
## 2. Work Location and Area



\* The barge transportation route in the vicinity of the Osaka light beacon will be approximately 1,000 m away from the beacon.

## 3. Work Overview

- The sediment and the gravel dredged from the sight front of 1-chome, Yumeshimahigashi, Konohana-ku, Osaka will be barge-transported to Section 2 of Hannan Port and Shinto, respectively.
- The gravel will be thrown in from Shinto by a floating crane.



## 4. Safety Measures

- Each workboat will display lights and objects specified by the Act for Preventing Collisions at Sea along with a workboat flag.
- The dredging area is near a container berth. Therefore, the parties concerned will carefully coordinate with the berth users so that there will be no hindrance to the arrival and departure of container vessels. A container ship with a total length of 250 m or more may enter or leave areas other than the quay C12 extension. If that is the case, then the grab dredger will be evacuated to a place that will not interfere with the operation of the container ship.
- During dredging, the dredger will raise a sign or banner indicating the ongoing operation of the dredging.
- Two watch boats will be allocated during the work, and each watch boat will hoist the watch boat flag shown on the right-hand side.
- For the latest schedule of the work, the position of the dredger, and the transportation schedule of the barge, check the website of the Osaka Harbor Information Center for Security of Ship Navigation or confirm with the parties concerned, including the contractor.

浚渫作業中

警戒船

警戒中  
WARNING

