

# NOTICE ON WORK IN NAVIGATION AND ANCHORING PROHIBITED AREA INVOLVED BY SHINTO CONSTRUCTION WORK IN OSAKA AREA SECTION 6 OF HANSHIN PORT

Constructor: Goyo and Aomi Specified Construction Joint Venture  
 Inquiry: Osaka Harbor Information Center for Security of Ship Navigation  
 [Website: <http://www.osakaharbor-info.com/>]  
 Ordering party: Osaka Port & Airport Construction Office, Kinki Regional Development Bureau, MLIT

TEL: 06-6115-8205  
 TEL: 06-6612-4363

TEL: 06-6574-8562

The following work will be carried out in the navigation and anchoring prohibited area and adjacent area in Osaka Area Section 6 of Hanshin Port: ① Sand filling, ② Laying of sand prevention sheets, ③ Deposition of riprap ④ Deposition of gravel, ⑤ Production and installation of bagged bedrock, ⑥ Backfilling, ⑦ Mixing treatment of the middle layer. All vessels passing nearby are requested to give a wide berth and navigate with caution.

## 1. Work Period and Time

- From January 11, 2022 through February 28, 2023
- Daytime work: Sunrise to sunset

## 2. Contents of Work

The following work will be conducted in the area shown below.

### [Navigation and anchoring prohibited area]

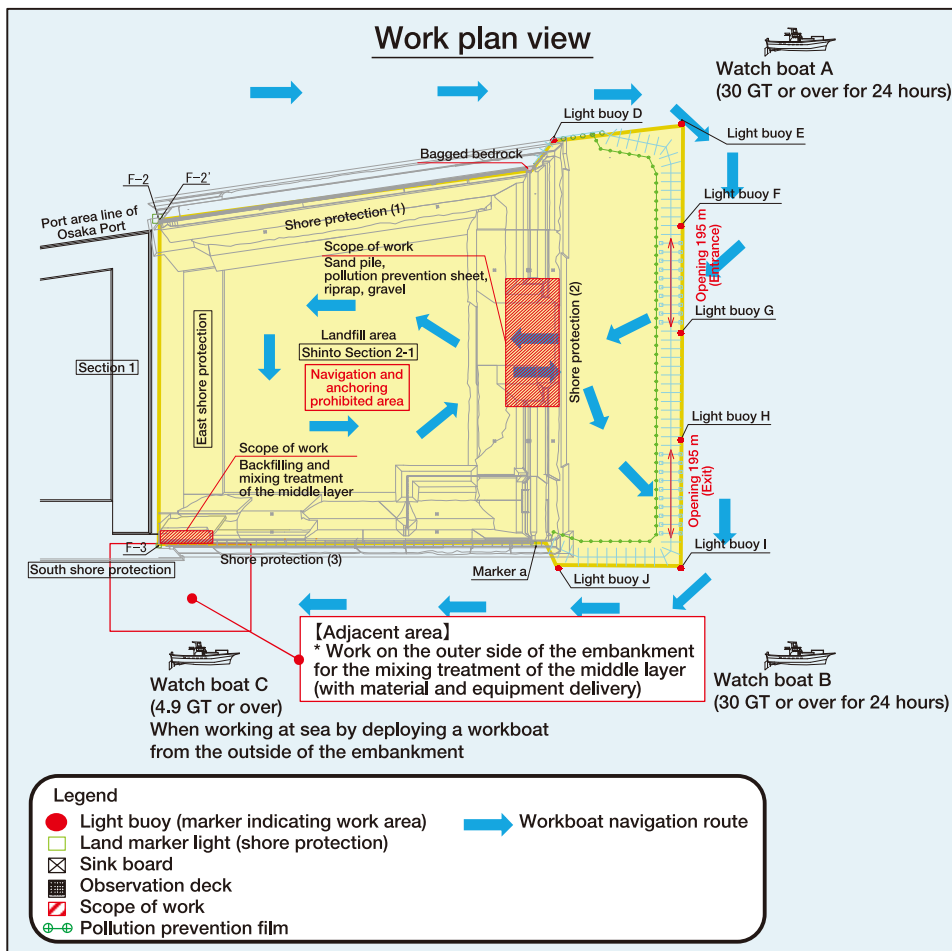
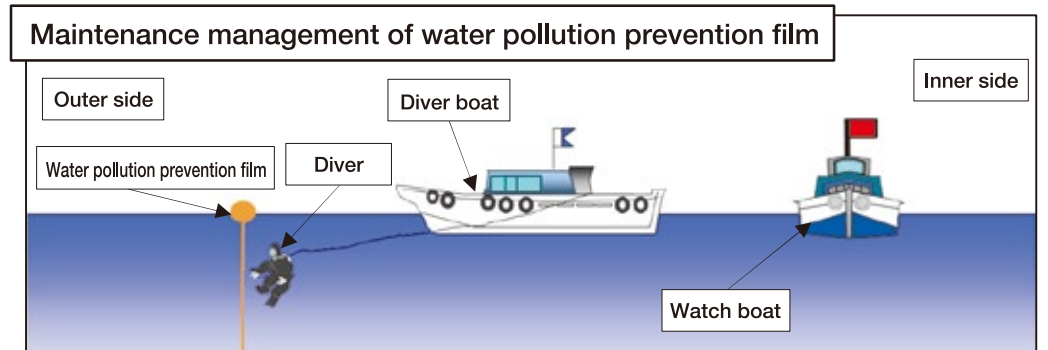
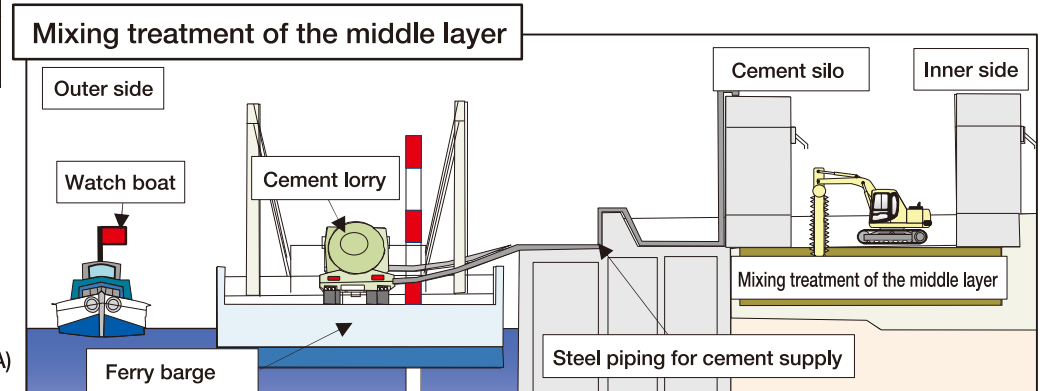
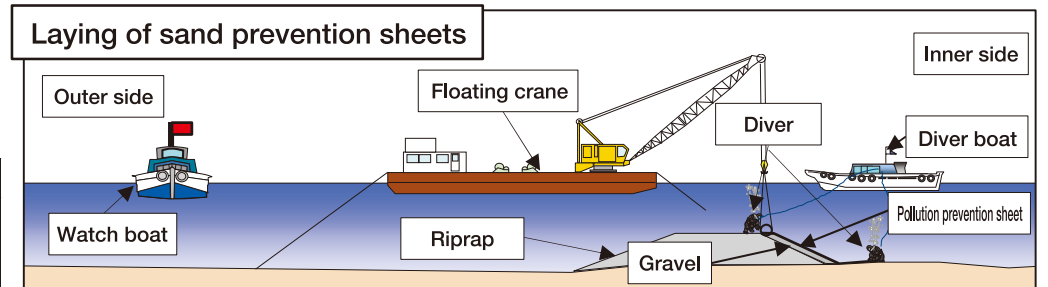
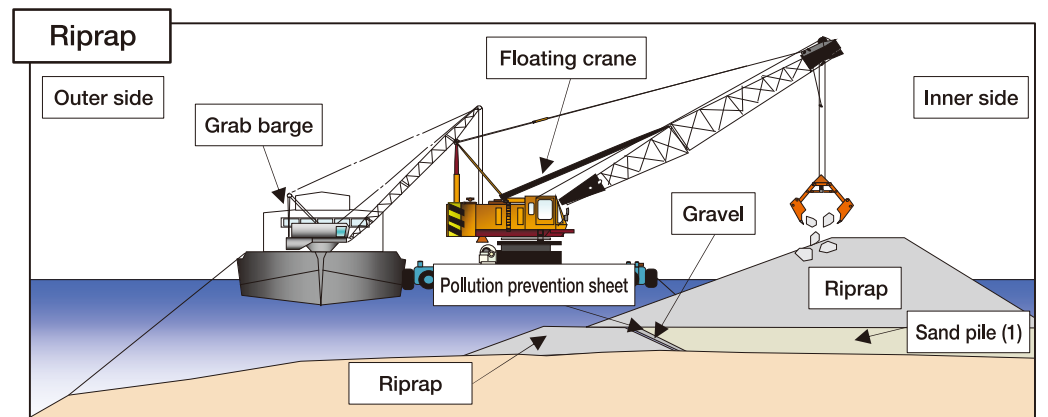
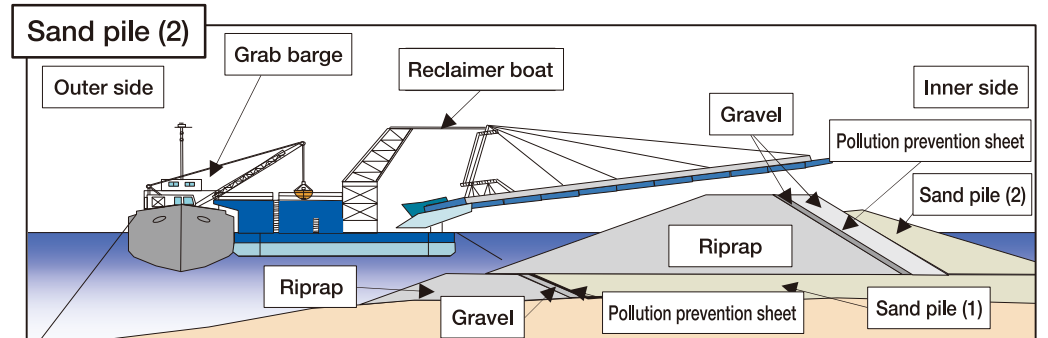
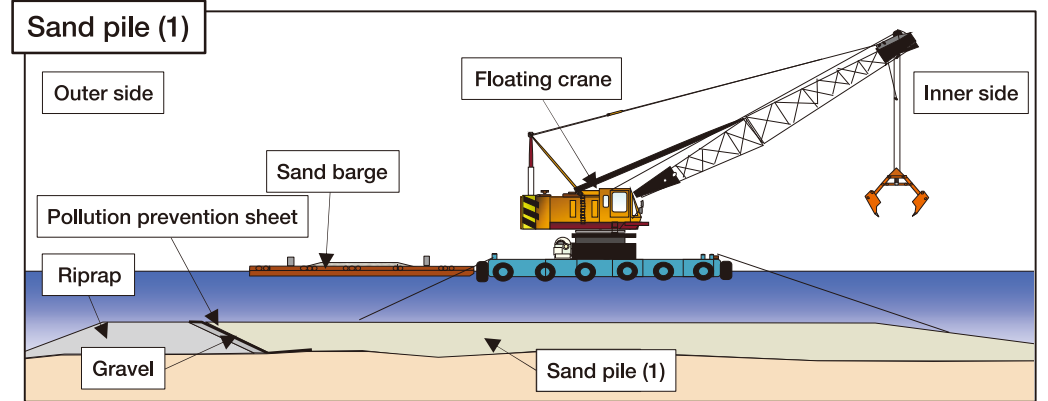
- ① Sand filling, ② Laying of sand prevention sheets, ③ Deposition of riprap ④ Deposition of gravel, ⑤ Production and installation of bagged bedrock, ⑥ Backfilling, ⑦ Mixing treatment of the middle layer

### [Adjacent area]

- ⑦ Mixing treatment of the middle layer (Carrying in materials and equipment)

Type of work	2021		2022										2023			
	Nov.	Dec.	Jan.	Feb.	Mar.	Apr.	May	June	July	Aug.	Sept.	Oct.	Nov.	Dec.	Jan.	Feb.
Preparatory work																
① Sand filling																
② Laying of sand prevention sheets																
③ Deposition of riprap																
④ Deposition of gravel																
⑤ Production and installation of bagged bedrock																
⑥ Backfilling																
⑦ Mixing treatment of the middle layer																
⑧ Maintenance management of pollution prevention film																
⑨ Allocation of watch boats																
Sweeping																

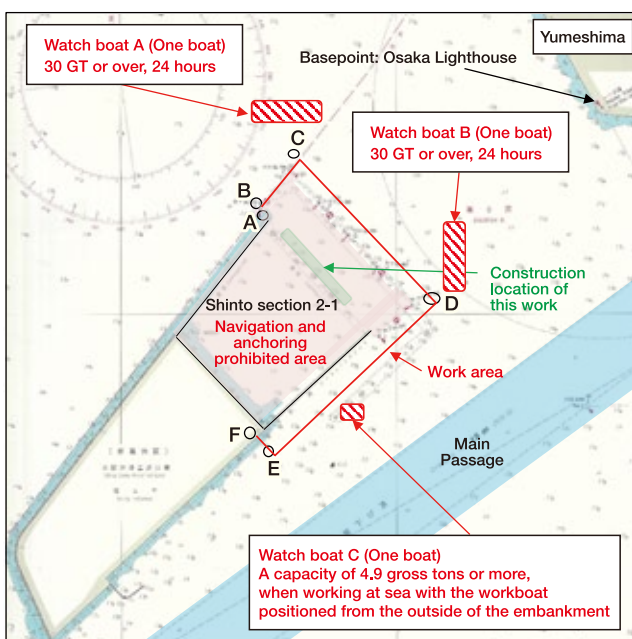
## 3. Work Overview



## 4. Safety Measures

- Each workboat will display a light and object specified by the Act for Preventing Collisions at Sea along with a flag ① indicating the destination of the boat.
- A watch boat (4.9-gross-ton class) will be allocated during underwater work.
- An international signal flag ② (Flag A) will be hoisted during underwater work.
- The watch boats, as described in the following table, will be allocated around the work area. Each watch boat will hoist a warning flag ③ to draw the attention of vessels passing nearby.

Base point	Osaka lighthouse World Geodetic System	34-38-36.6N	135-22-44.7E	Type of watch boat	Performance /Equipment	Number of boats	Watching hour
Point A	From base point	251°32' 29"	1,979 m away	Watch command boat A	30 GT or over (International VHF transceiver equipped)	1	24 hours
Point B	From point A	350°26' 04"	76 m away	Watch boat B	30 GT or over	1	24 hours
Point C	From point B	38°28' 04"	364 m away	Watch boat C	4.9 GT or over	1	When working
Point D	From point C	136°24' 47"	1,100 m away				
Point E	From point D	226°21' 04"	1,200 m away				
Point F	From point E	316°19' 42"	150 m away				



### ① Destination indication flag



### ② International signal flag (Flag A)



### ③ Watch boat flag



警戒中 WARNING